



नवीन विद्यापीठ टी. टी. कॉलेज

निम्बी जोधां , तहसील-लाडनूँ , जिला-डीडवाना कुचामन (राज.)

Date: 01/06/2026

:: Recent Developments and Facilities Added ::

In the recent quarter, Naveen Vidyapeeth T.T. College, Nimbi Jodhan has taken several progressive steps to improve academic standards and create a better learning atmosphere. The following additions and improvements have been made as part of the institution's continuous growth:

1. Academic Development:

New classrooms have been arranged with better infrastructure and teaching support systems. Laboratory facilities have been enhanced with updated equipment and improved practical arrangements.

Modern teaching practices have been encouraged to make the learning process more effective.

2. Library Development:

Latest books, journals and study materials have been added according to the revised curriculum.

Digital learning resources (<https://nvpttc.librarika.com>) and e-content access (<https://www.nvpttc.com/e-content>) have been expanded.

Reading facilities and study environment in the library have been improved.

3. ICT & Digital Upgradation:

Internet connectivity across the campus has been strengthened.

Computer facilities have been upgraded for academic and office use.

Digital and Online Classroom created as per NEP 2020. (<https://www.nvpttc.com/Video>)

4. Student Welfare Initiatives:

Improved facilities for clean drinking water and sanitation have been ensured.

Guidance and counseling support for students has been enhanced.

Co-curricular and sports-related facilities have been promoted.

5. Administrative & Infrastructure Improvement:

The college has installed a lift facility and improved the campus infrastructure to make the institution more accessible and suitable for physically disabled students, staff, and visitors. Office and staff rooms have been reorganized for better efficiency.

Campus maintenance and cleanliness have been given priority.

Overall physical infrastructure has been upgraded to support academic activities.

These efforts highlight the institution's dedication towards providing quality education and fostering holistic development of students.


प्राचार्य

नवीन विद्या पीठ टी.टी.कॉलेज
निम्बी जोधां, जिला-नागौर (राज.)


सचिव

नवीन विद्या पीठ शिक्षा समिति
निम्बी जोधां, जिला-नागौर (राज.)

APH PUBLISHING CORPORATION

4435-36/7 ANSARI ROAD, DARYAGANJ, NEW DELHI-110 002

Tel.:011-23274050/9810121903/9818581487, E-Mail:aphbooks@gmail.com

SOLD TO

NAVEEN VIDYAPEETH T.T.COLLEGE

NIMBI JODHA, LADNU

DIDWANA KUCHAMAN

PIN-341316

Invoice


| Invoice | CARRIER | Date |
|---------|-----------|---------------|
| 38590 | TRANSPORT | 03 April.2026 |

INDIAN ORIGIN BOOKS

| S.No. | YEAR | TITLE | Amount |
|--|---------------|--|-----------|
| ANNUAL SUBSCRIPTION FOR MAGAZINES/JOURNALS/PERIODICALS | | | |
| 1 | JAN.-DEC.2025 | INT'L JOURNAL OF MATHEMATICS & MATHEMATICAL SCIEN | 1,600.00 |
| 2 | JAN.-DEC.2025 | JOURNAL:MATHEMATICS TODAY | 1,600.00 |
| 3 | JAN.-DEC.2025 | INT'L JOURNAL OF MATHEMATICAL EDUCATION | 1,600.00 |
| 4 | JAN.-DEC.2025 | INT'L JOURNAL OF INNOVATIVE RESEARCH IN PHYSICS | 1,600.00 |
| 5 | JAN.-DEC.2025 | INT'L JOURNAL OF PHYSICS AND APPLICATION | 1,600.00 |
| 6 | JAN.-DEC.2025 | INT'L JOURNAL OF SCIENTIFIC RESEARCH IN PHYSICS | 1,600.00 |
| 7 | JAN.-DEC.2025 | INT'L JOURNAL OF CHEMICAL RESEARCH & DEVELOPMENT | 1,600.00 |
| 8 | JAN.-DEC.2025 | INT'L JOURNAL OF CHEMICAL STUDIES | 1,600.00 |
| 9 | JAN.-DEC.2025 | INT'L JOURNAL OF CHEMICAL CONCEPTS | 1,600.00 |
| 10 | JAN.-DEC.2026 | INT'L JOURNAL OF PHYSICAL EDUCATION SPORTS AND HEA | 1,600.00 |
| 11 | JAN.-DEC.2026 | INTERNATIONAL JOURNAL OF EDUCATION | 1,600.00 |
| 12 | JAN.-DEC.2026 | JOURNAL OF TEACHER EDUCATION AND RESEARCH | 1,600.00 |
| 13 | JAN.-DEC.2026 | INTERNATIONAL JOURNAL OF HIGHER EDUCATION | 1,600.00 |
| 14 | JAN.-DEC.2026 | INT'L JOURNAL OF PHYSICAL EDUCATION FITNESS AND SP | 1,600.00 |
| 15 | JAN.-DEC.2026 | INTERNATIONAL JOURNAL OF PSYCHOLOGY AND HUMAN D | 1,600.00 |
| 16 | JAN.-DEC.2026 | JOURNAL OF EDUCATION | 1,600.00 |
| 17 | JAN.-DEC.2026 | INTERNATIONAL JOURNAL OF EDUCATION TECHNOLOGY A | 1,600.00 |
| 18 | JAN.-DEC.2026 | INTERNATIONAL JOURNAL OF EDUCATION TEACHING AND I | 1,600.00 |
| 19 | JAN.-DEC.2026 | INT'L JOURNAL OF RESEARCH IN ENGLISH EDUCATION | 1,600.00 |
| 20 | JAN.-DEC.2026 | INT'L JOURNAL OF PHILOSOPHY OF EDUCATION | 1,600.00 |
| 21 | JAN.-DEC.2026 | JOURNAL OF EDUCATIONAL PSYCHOLOGY | 1,600.00 |
| 22 | JAN.-DEC.2026 | JOURNAL OF INDIAN EDUCATION | 1,600.00 |
| | | 22 Journals | 35,200.00 |
| | | Less | 14,200.00 |
| | | | 21,000.00 |
| ENCYCLOPAEDIA'S | | | |
| | | ENCYCLOPAEDIA'S/MULTI VOLUME SETS | |
| 1 | | ENCY. OF CURRICULUM DEVELOPMENT-3 VOLS. | 7,495.00 |
| | | Vol.1:-CURRICULUM DEVELOPMENT | |
| | | Vol.2-CURRICULUM RESEARCH | |
| | | Vol.3-PRINCIPLES OF CURRICULUM | |

APH PUBLISHING CORPORATION
4435-36/7, Ansari Road, Darya Ganj,
New Delhi-110002



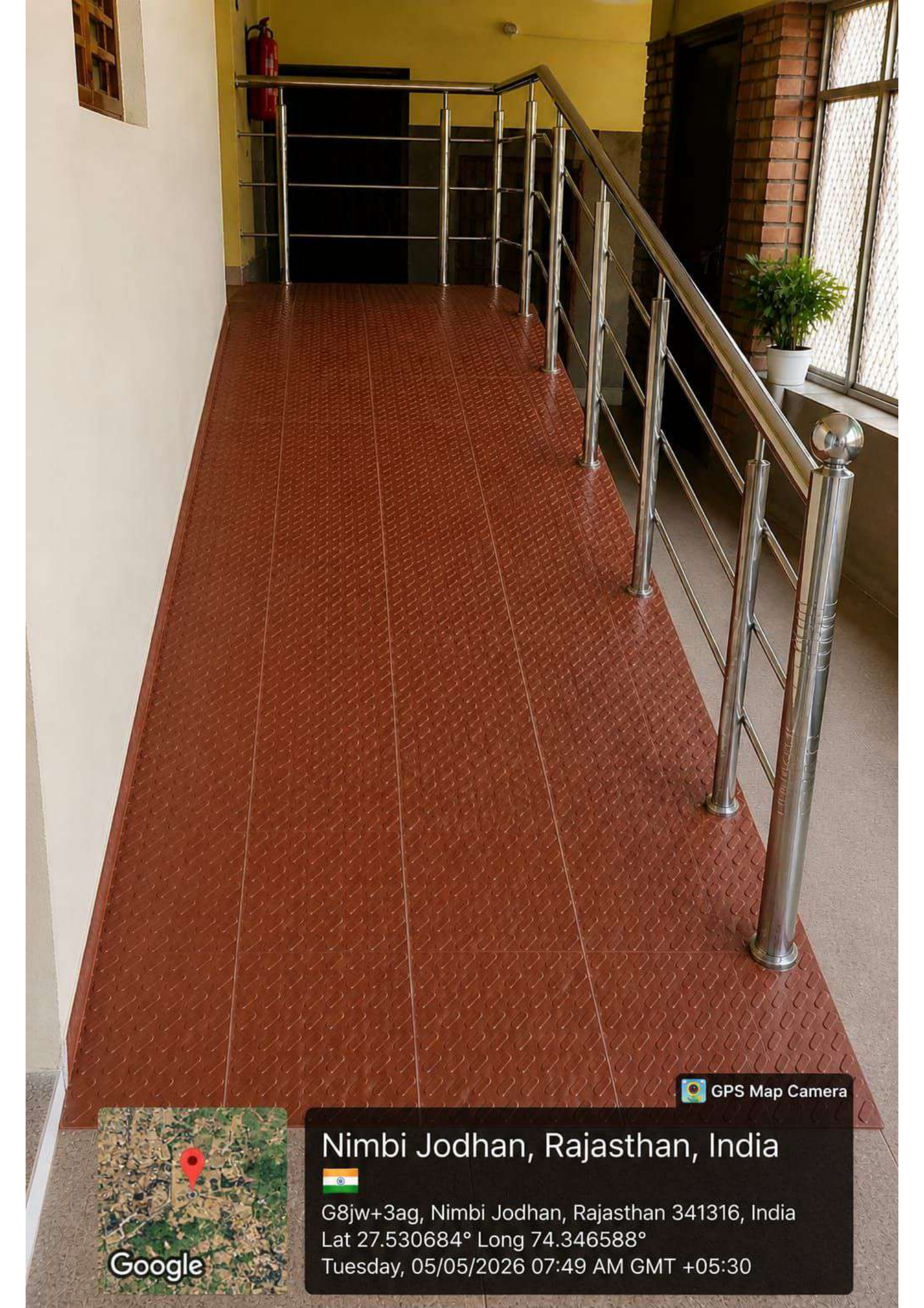
 GPS Map Camera




Nimbi Jodhan, Rajasthan, India



G8jw+3qg, Nimbi Jodhan, Rajasthan 341316, India
Lat 27.530684° Long 74.346588°
Tuesday, 05/05/2026 07:49 AM GMT +05:30



 GPS Map Camera



Nimbi Jodhan, Rajasthan, India

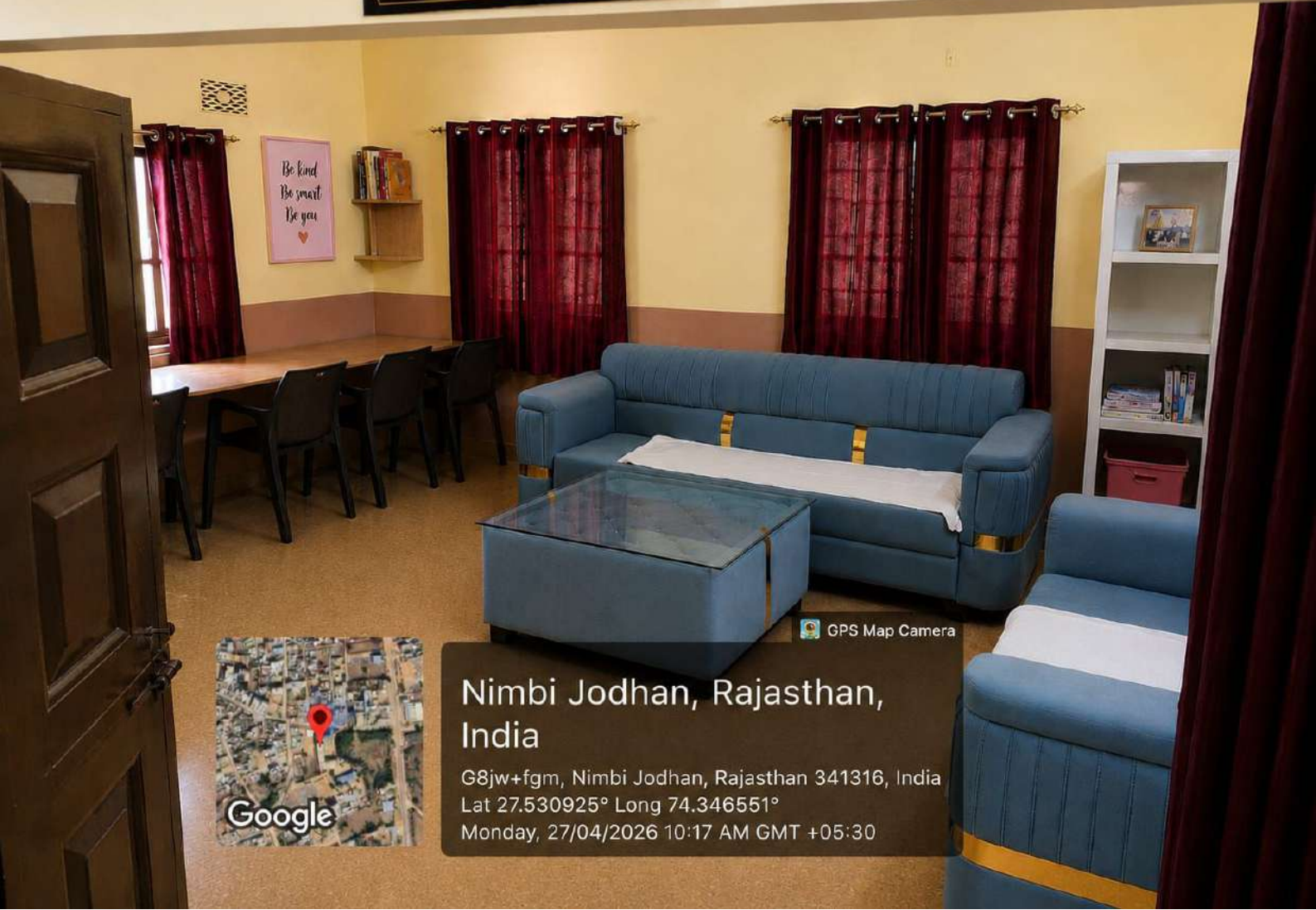


G8jw+3ag, Nimbi Jodhan, Rajasthan 341316, India

Lat 27.530684° Long 74.346588°

Tuesday, 05/05/2026 07:49 AM GMT +05:30

GIRLS COMMON ROOM

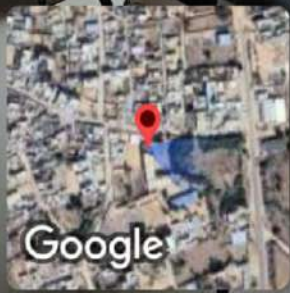


GPS Map Camera
**Nimbi Jodhan, Rajasthan,
India**
G8jw+fgm, Nimbi Jodhan, Rajasthan 341316, India
Lat 27.530925° Long 74.346551°
Monday, 27/04/2026 10:17 AM GMT +05:30



NAVEEN VIDYA PEETH
ICT RESOURCE CENTER

GPS Map Camera



Google

Nimbi Jodhan, Rajasthan, India 🇮🇳
G8jw+fgm, Nimbi Jodhan, Rajasthan 341316, India
Lat 27.530939° Long 74.346544°
Saturday, 18/04/2026 07:46 PM GMT +05:30



[Video Lecture](#)

[Click Here for Digital Library](#)

DIGITAL E-BOOKS AND JOURNALS

| S. No. | Resource Name | Website Link |
|--------|-------------------|----------------------------|
| 1 | Indian Newspanner | Click Here |

Activate Windows
Go to Settings to activate Windows.

Welcome to Naveen Vidyapeeth Library
Where Knowledge Inspires Excellence.

Naveen Vidyapeeth Library is a center of learning, teaching, research, and academic growth. This digital library platform has been developed to provide students, teachers, and scholars with easy, organized, and convenient access to books, reference materials, and academic resources.

Member Login

Username

Password

Login

Search Catalog

Keyword

Media Type
All

Search

- ### Library Resources
- Database A-Z
 - Top Collections
 - New Arrivals
 - Ask a Librarian
 - Libraria

New Arrivals



Activate Windows
Go to Settings to activate Windows.